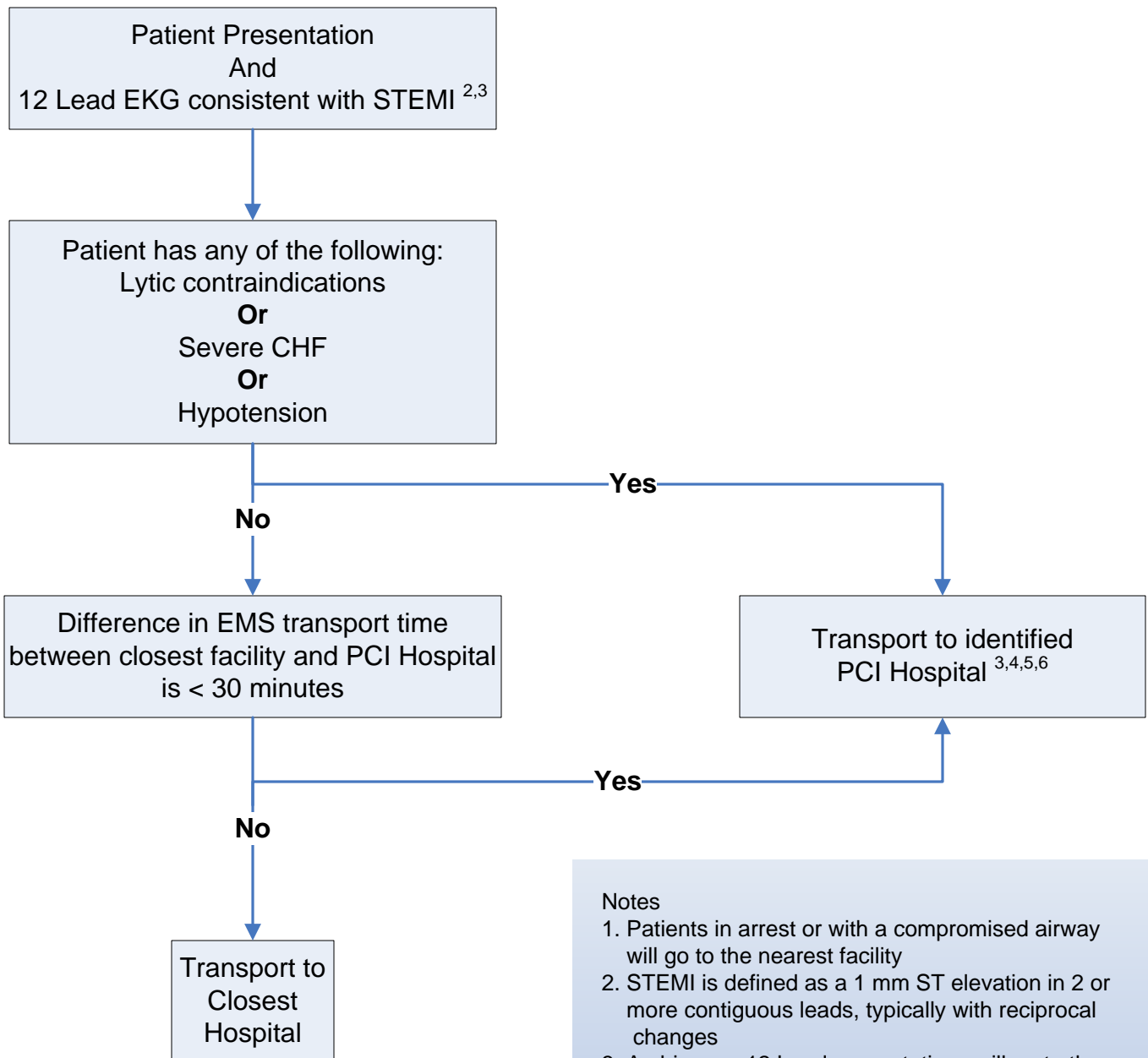


# Southeastern Massachusetts EMS Council (Region V) STEMI Point of Entry for ALS Transported Patients



## Notes

1. Patients in arrest or with a compromised airway will go to the nearest facility
2. STEMI is defined as a 1 mm ST elevation in 2 or more contiguous leads, typically with reciprocal changes
3. Ambiguous 12 Lead presentations will go to the nearest facility
4. Bypassing the nearest facility must be approved by On Line Medical Control
5. Receiving PCI center must be notified
6. Consider Patient preference/history and established relationships if multiple PCI centers are an option

## PCI Centers for Region V

Brockton Hospital  
Caritas Good Samaritan  
Cape Cod Hospital  
Caritas Norwood  
Charlton Memorial (South Coast Group)  
Miriam Hospital Rhode Island  
South Shore Hospital